



*A manufacturer's representative with over 30 years experience serving the OEM lighting market.*

*Visit our website to learn more about the premier manufacturers we represent [oemlightingsales.com](http://oemlightingsales.com).*

## Symbiosis

### An ecosystem for a better LED lighting experience

An LED lighting ecosystem that goes beyond straightforward cooperation between its components.

Symbiosis creates a better lighting experience, adds value through extended functionality, and pushes dynamic, intelligent lighting into whole new application areas. The eldoLED driver is at the heart of the Symbiosis ecosystem, with its LEDcode bus offering digital control, and combining data and power over 2 wires.

Communicating / Sharing

Tooling

Protecting

Connecting

Sensing

Lighting dynamics



## Symbiosis, Dual 0-10V to DALI translator

### Features & benefits

LightShape	Enables 0-10V control of eldoLED DUALdrive drivers for Tunable White applications
Plug & Play	No DALI commissioning in combination with eldoLED DUALdrive drivers
Certification	UL Listed for factory and field installations
DALI power	Provides up to 30mA of DALI bus power (supports up to 15 drivers)
Wide input voltage range	120-277 VAC Compatible
Installation	Mountable in UL remote or fixture enclosure for zone or individual luminaire control

### Control characteristics

Control channels	2 analog inputs
Dimming protocol	0-10V
Dimming range	100% - 0.1% for DUALdrive, programmed with LightShape Tunable White
Dimming curve	Linear

### Environmental conditions

Operating ambient temperature (Ta) range	-20 °C to +50 °C
Humidity	IP20 damp and dry
Lifetime	Excess of 50,000 hours

### Warranty

[General Terms and Conditions](#)

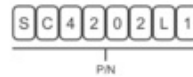
### Product offering



**Symbiosis, Dual 0-10V to DALI translator** P/N: SC4202L1

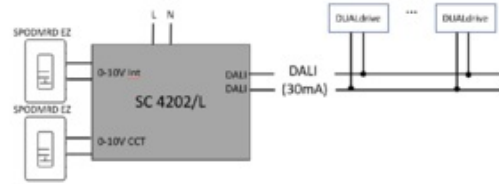
Symbiosis Connecting, Dual 0-10V to DALI translator, 2 control channels

### Order number



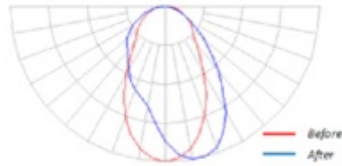
P/N: Part number of product

### System wiring diagram

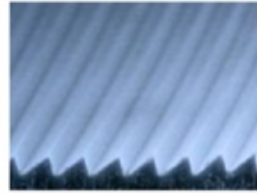


## WhiteOptics® Asymmetric Linear Prism Film

**Application:** Display and Lighting applications where asymmetric light bending is required. Can be used with collimated and diffused sources to create asymmetric "wall wash" distributions. Works with both linear and spot sources.



Effect of DFLB-20 on a linear source



DFLB-20 Microstructure

Optical Efficiency*				
DFLB-20	20°	>93%	24" (610mm)	0.005" (127 μm)



WhiteOptics LLC  
243-G Quigley Blvd.  
New Castle, DE 19720



[inquiries@whiteoptics.com](mailto:inquiries@whiteoptics.com)  
[www.whiteoptics.com](http://www.whiteoptics.com)



302-476-2055

For more information [click here](#)



## WhiteOptics LLC® Welcomes Bob Ezell as Director of Engineering

WhiteOptics is proud to welcome Bob Ezell as our new Director of Engineering. Mr. Ezell will work with our WhiteOptics engineering team to continue development on our micro-structured optics and light guide technologies as we continue to lead the industry in optical materials innovation.

Mr. Ezell comes to us with over 20 year of new technology development and operational management experience, having previously served as a Senior Engineering Manager for Rambus Lighting Division.

Please join us in welcoming Bob Ezell to the WhiteOptics Team!"



WhiteOptics LLC  
243-G Quigley Blvd.  
New Castle, DE 19720



[inquiries@whiteoptics.com](mailto:inquiries@whiteoptics.com)  
[www.whiteoptics.com](http://www.whiteoptics.com)



302-476-2055

## MIRO® & MIRO-SILVER® 12 HD

Diffuse Oberflächen für LED-Anwendungen  
*Diffuse surfaces for LED applications*



### MIRO® & MIRO-SILVER® 12 HD

Our new diffuse reflecting surfaces MIRO® 12 HD & MIRO-SILVER® 12 HD are an instrument to dissolve LED light spots and to reduce luminance contrasts - thus perfectly suitable for glare control purposes.



**Thermal management challenges? Contact us to help reduce the heat in your luminaire through the use of thermal gap pads.**

TSG is an industry leader for die cutting services, such as flat bed, rotary and large platen head die cutting for larger parts. Their products include gaskets, seals, electrical insulators, high temperature insulation, EMI-RFI Shielding, Thermal Management, and acoustical insulation.

These materials include, but are not limited to, acrylic foam tapes, fabrics, felt, foam, fiberglass, and ceramic insulation. We cut just about every type of rubber or plastic product available. Some include Polyurethane, EPDM, PVC, Neoprene, Cross Link Polyethylene, Polyether, Polyester, and Silicone.

Please forward quote requests and orders  
to: [orders@oemlightingsales.com](mailto:orders@oemlightingsales.com)

Visit our website to learn more about our  
premier manufacturers:  
[www.oemlightingsales.com](http://www.oemlightingsales.com)

*Give us a call today!*  
*718.321.0002*

*41-07 162nd St*  
*Flushing, NY 11358*